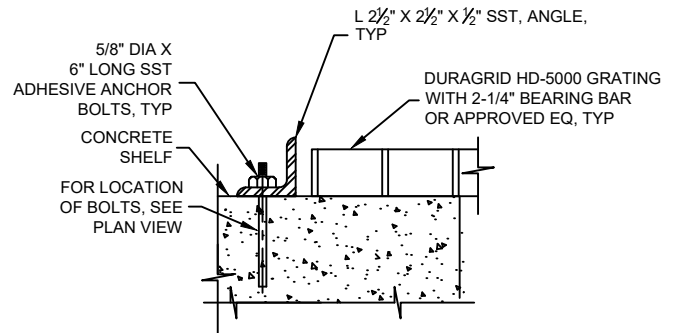


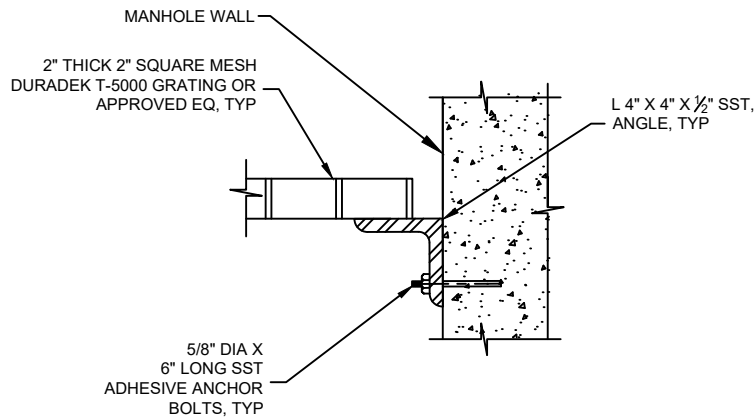
**NOTES:**

1. ATTACH LIFT TORQUE ARM BRACKET TO GEARED OPERATOR OR SLIDE GATE FRAME AS REQUIRED TO PROVIDE 6-INCH SEPARATION BETWEEN CENTER OF PIPE AND CENTER OF GEARED OPERATOR.
2. BRACKET SHALL BE COMPATIBLE WITH WATERMAN GMH-12 PORTABLE GAS ENGINE DRIVEN HYDRAULIC OPERATOR.

**LIFT TORQUE ARM BRACKET**



**CONNECTION DETAIL**



**WALL CONNECTION DETAIL**



NO SCALE



**JORDAN BASIN**  
IMPROVEMENT DISTRICT

**DIVERSION STRUCTURE  
DETAIL (2)**

DRAWN:	DESIGNED:	CHECKED:	APPROVED:
DATE AUG 2024	FILE NAME	DRAWING NAME SS-10B	